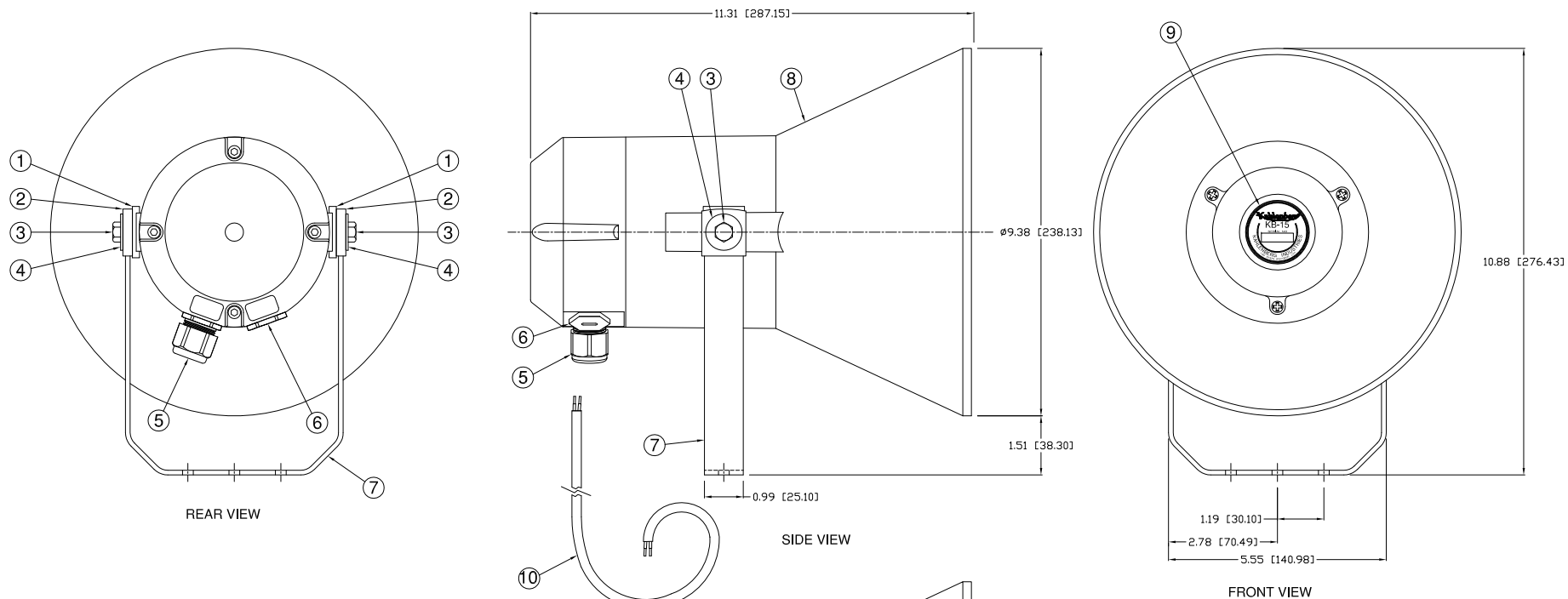
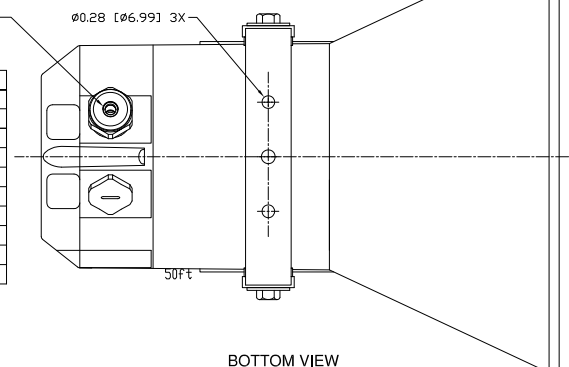


REV.	BY	DATE	DESCRIPTION	APP'D.
A	ZN	11/12/15	ADDED ITEM 10	EMK



NO.	PART #	DESCRIPTION	REQ
1	P027-15	CLAMP, BRACKET	2
2	P027-16	GUIDE, BRACKET	2
3	W009-060SS	SCREW, HEX HD, M8 X 1.25 X 25mm	2
4	W100-009SS	WASHER, FLAT, 8.4mm I.D. X 24mm O.D. X 2.2mm THICK	2
5	P556-08	CORD GRIP, M20 X 1.5 THREAD, .24-.47" CABLE	1
6	P127-11	PLUG, BLANKING, M20 X1.5 THREAD	1
7	P564-12	BRACKET, MOUNTING	1
8	P527-04	PROJECTOR / DRIVER ASSEMBLY, COMPLETE UNPAINTED	1
9	P133-13	NAMEPLATE, KB-15	1
10	P557-04	CABLE, MARINE TYPE, 16AWG, 2 CONDUCTOR, 600V.	50'

LIQUID TITE CORD GRIP
Ø0.25" [6.35mm] - Ø0.45 [11.43mm]



TECHNICAL DATA

Frequency: 698 Hz
Sound Pressure Level (dB(A) at 1 meter): 121dB
Sound Pressure Level (1/3 octave at 1 meter): 121dB
Electric Power: 12 or 24 V.D.C.
Power Consumption: 30 Watts
Protection of Ingress: IP67
Temperature Range: -30°F (-34°C) to 120°F (49°C)
Material (Projector): Gray Polyamide
(Mounting Bracket): Stainless Steel
Net Weight: 4 Lbs. (1.81 Kg)

CONFIDENTIAL

INFORMATION CONTAINED HEREIN IS CONFIDENTIAL. IT IS THE PROPERTY OF KAHLENBERG INDUSTRIES INC. IT IS TO BE USED SOLELY FOR THE PURPOSE PROVIDED, AND IT IS NOT TO BE DISCLOSED TO OTHERS WITHOUT THE PRIOR WRITTEN CONSENT OF KAHLENBERG INDUSTRIES INCORPORATED.

CAGE: 75214

© Copyright Kahlenberg Ind. Inc. 2010

Kahlenberg

OUTLINE DIMENSIONS / ASSEMBLY KB-15G HORN

DR.	DATE	CKD.	SCALE	DRWG. NO.	REV.
ZJN	09/15/15	EMK	N.T.S.	3-6984	A